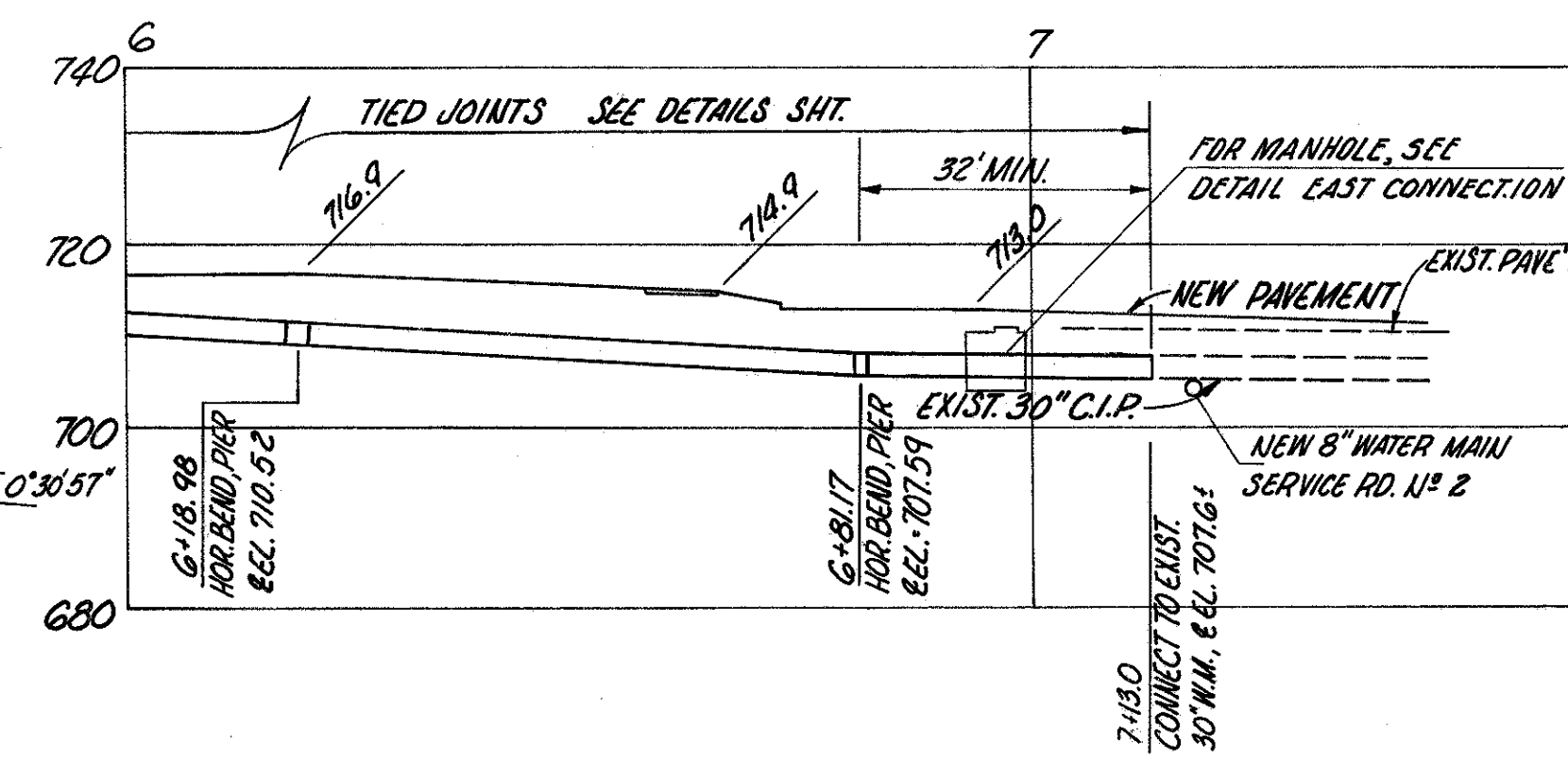
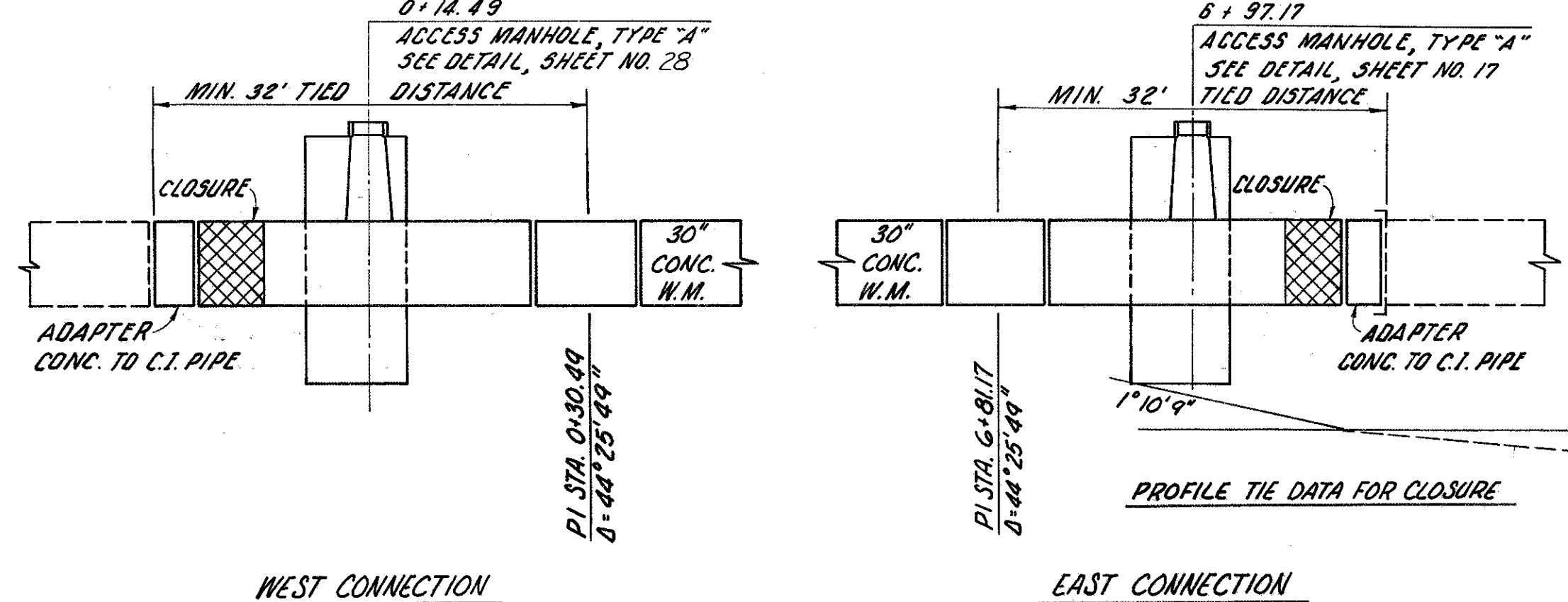
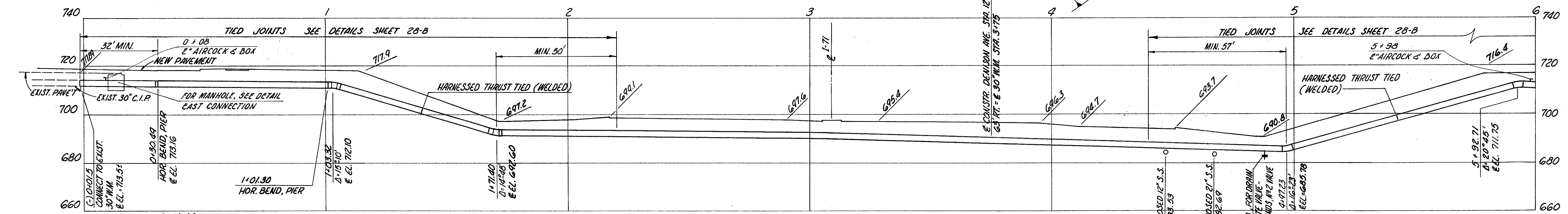


NOTES:
 RELOCATED 12" W.M. TO BE IN SERVICE BEFORE SERVICE IN THE EXISTING 30" W.M. IS INTERRUPTED.
 SEE SHEET 22 (FULTON AVE. 36" W.M.) SERVICE IN DENISON AVE. 30" W.M. CANNOT BE DISCONTINUED WHEN FULTON RD. 36" W.M. IS OUT OF SERVICE.
 DETAILS OF PROPOSED PIPE TO EXISTING PIPE CONNECTIONS TO BE FURNISHED BY THE CONTRACTOR.

DENISON AVENUE
 PROFILE OF RELOCATED 30" WATER MAIN



1ST. HIGH SERVICE DISTRICT
 DEPARTMENT OF PUBLIC UTILITIES
 DIVISION OF WATER AND HEAT
 CLEVELAND, OHIO
 APPROVED MARCH 26, 1965
 V.M. DeMelt DIRECTOR OF PUBLIC UTILITIES
 J.E. Stanton COMMISSIONER OF WATER AND HEAT
 Arnold Porter COMMISSIONER - DIVISION OF UTILITIES - ENGINEERING
 J.R. Connor ENGINEER OF CONSTRUCTION & SURVEYS
 William J. Swamy ENGINEER OF DESIGN

HORIZONTAL & VERTICAL SCALES 1"=20'					
RACKOFF ASSOCIATES					
ENGINEERS COLUMBUS - CLEVELAND, OHIO					
MEDINA FREEWAY					
RELOCATED 30" & 12" WATER MAIN					
IN					
DENISON AVE.					
Designed	Drawn	Traced	Checked	Reviewed	Date